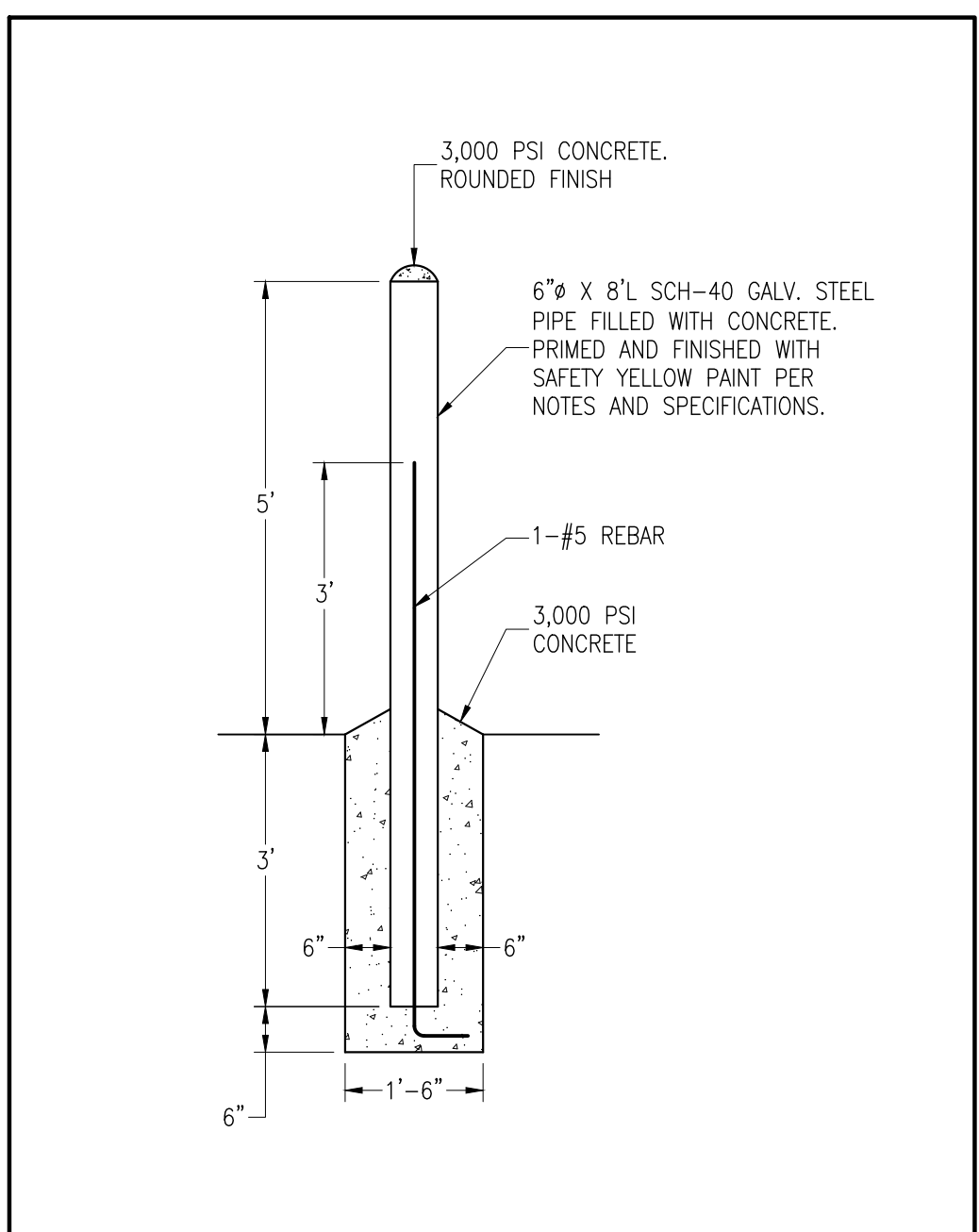
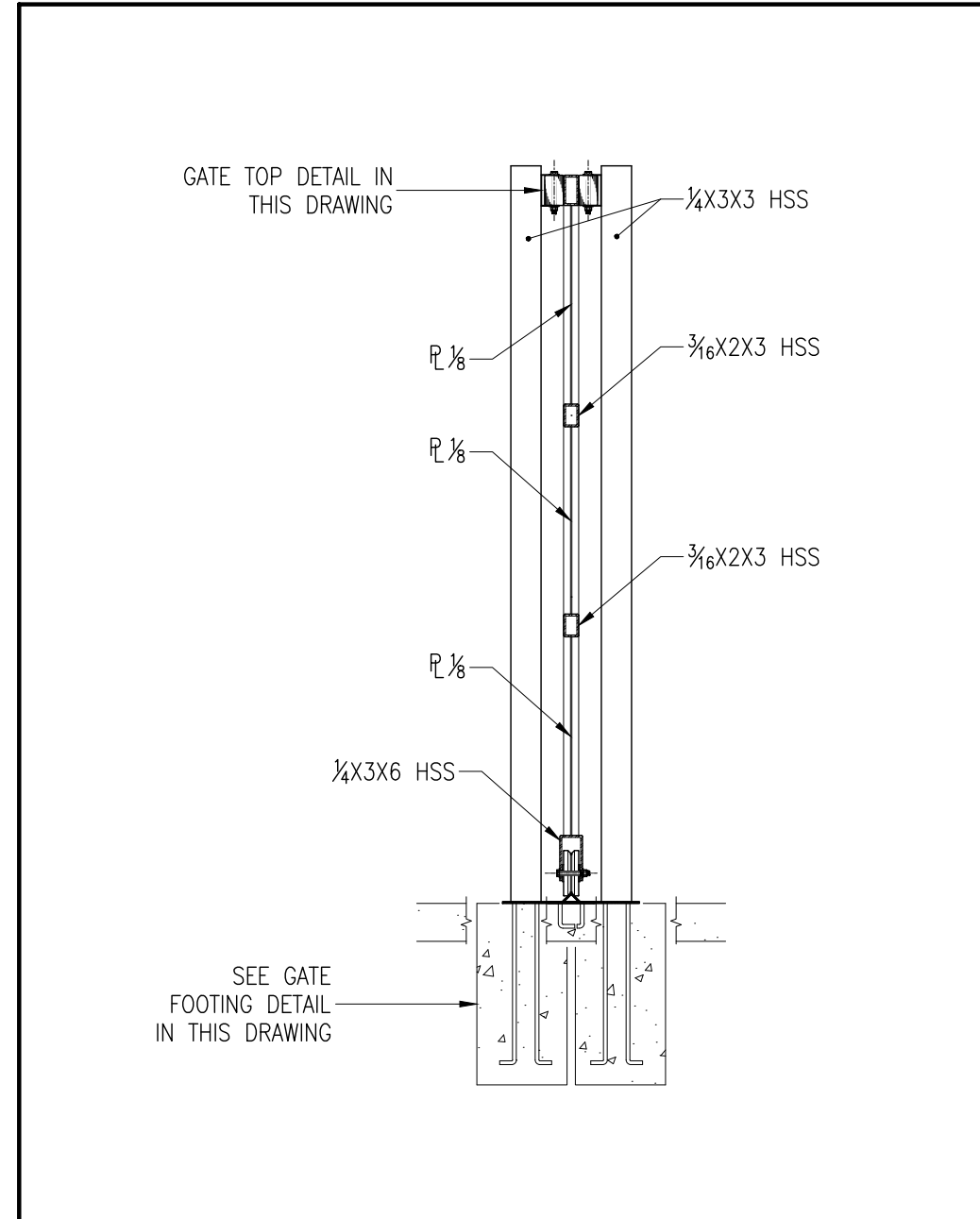


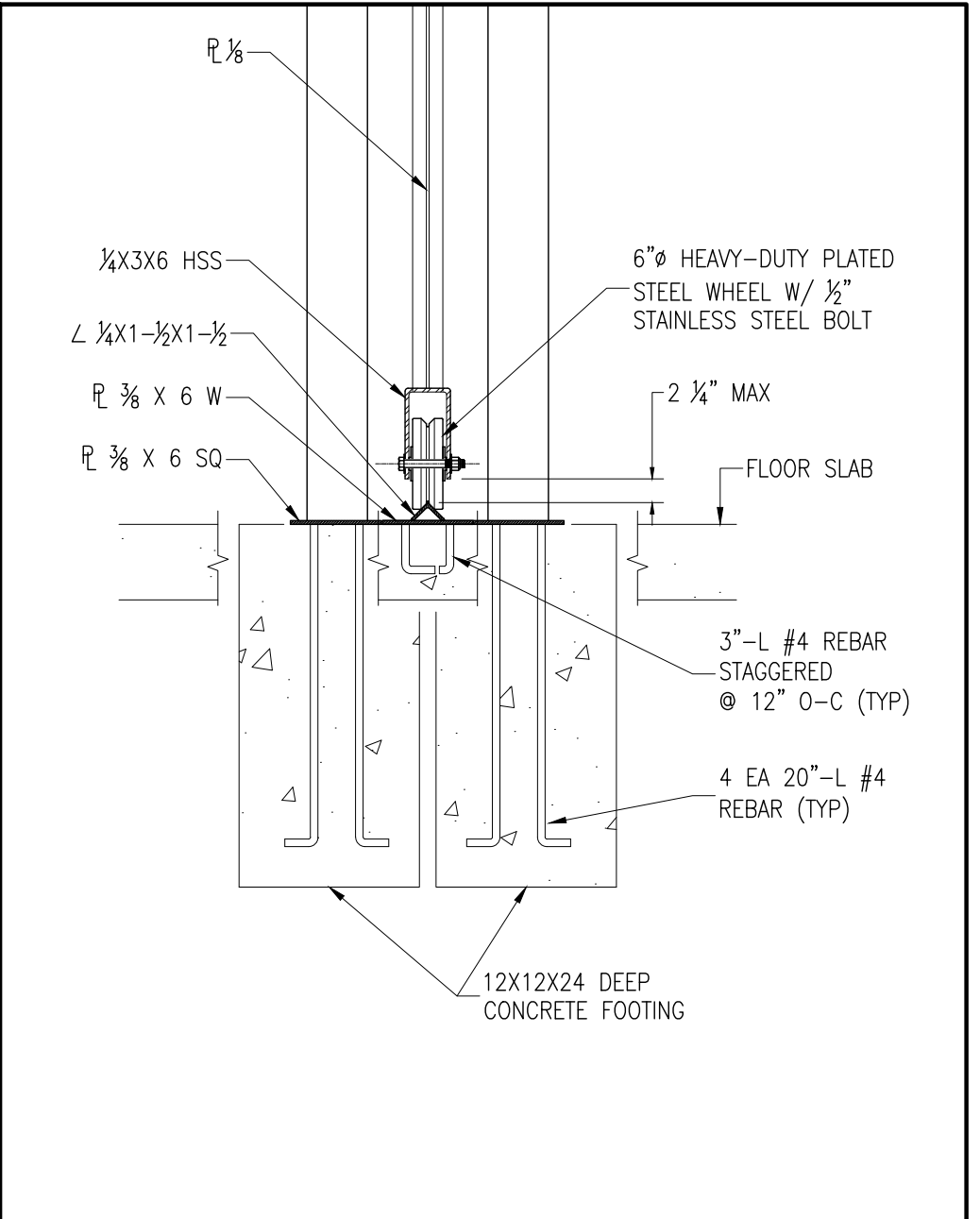
**1 WEST WALL INTERIOR ELEVATION**  
**S-2** SCALE: 1/2" = 1' - 0"



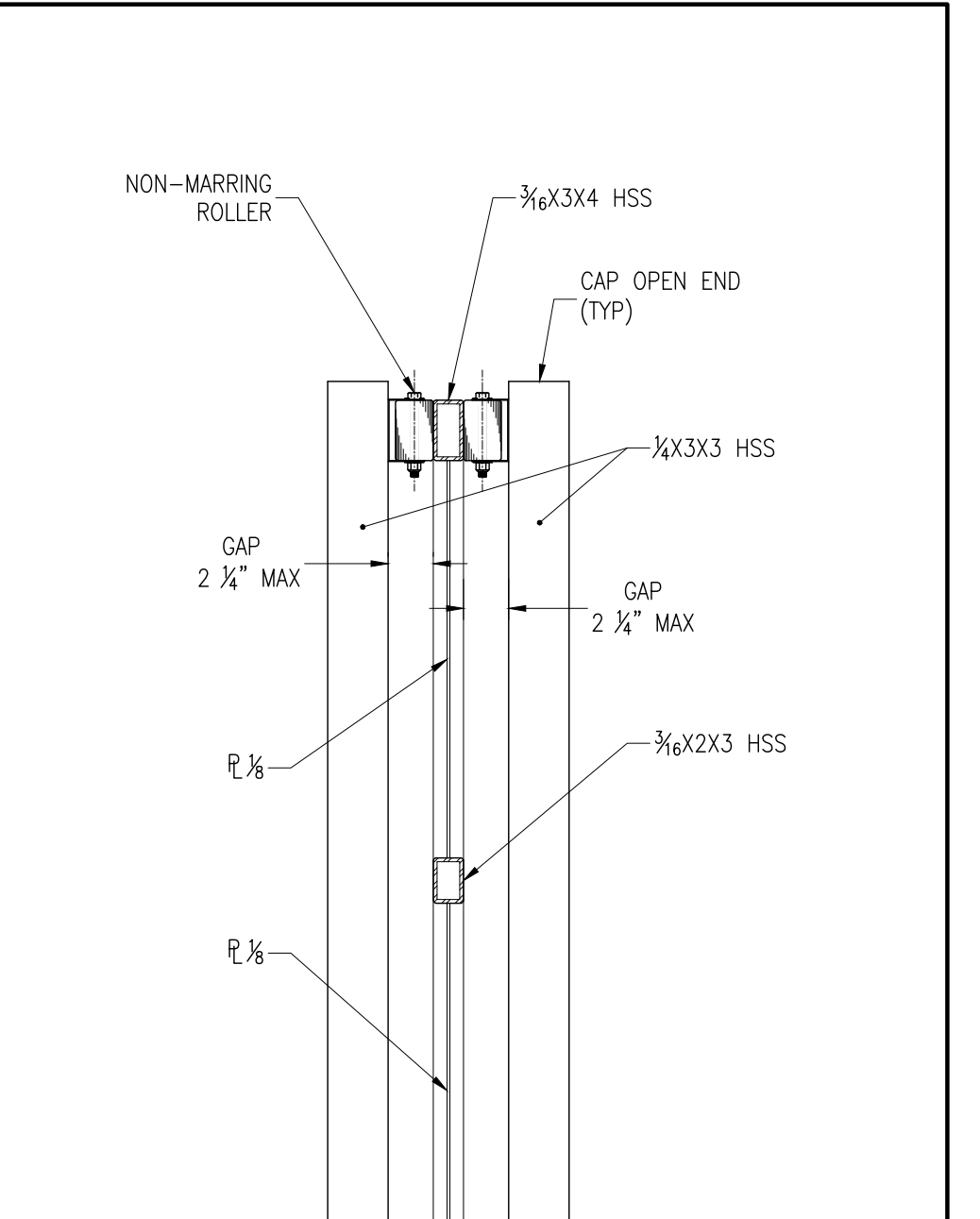
**BOLLARD**  
 SCALE: 1/2" = 1' - 0"



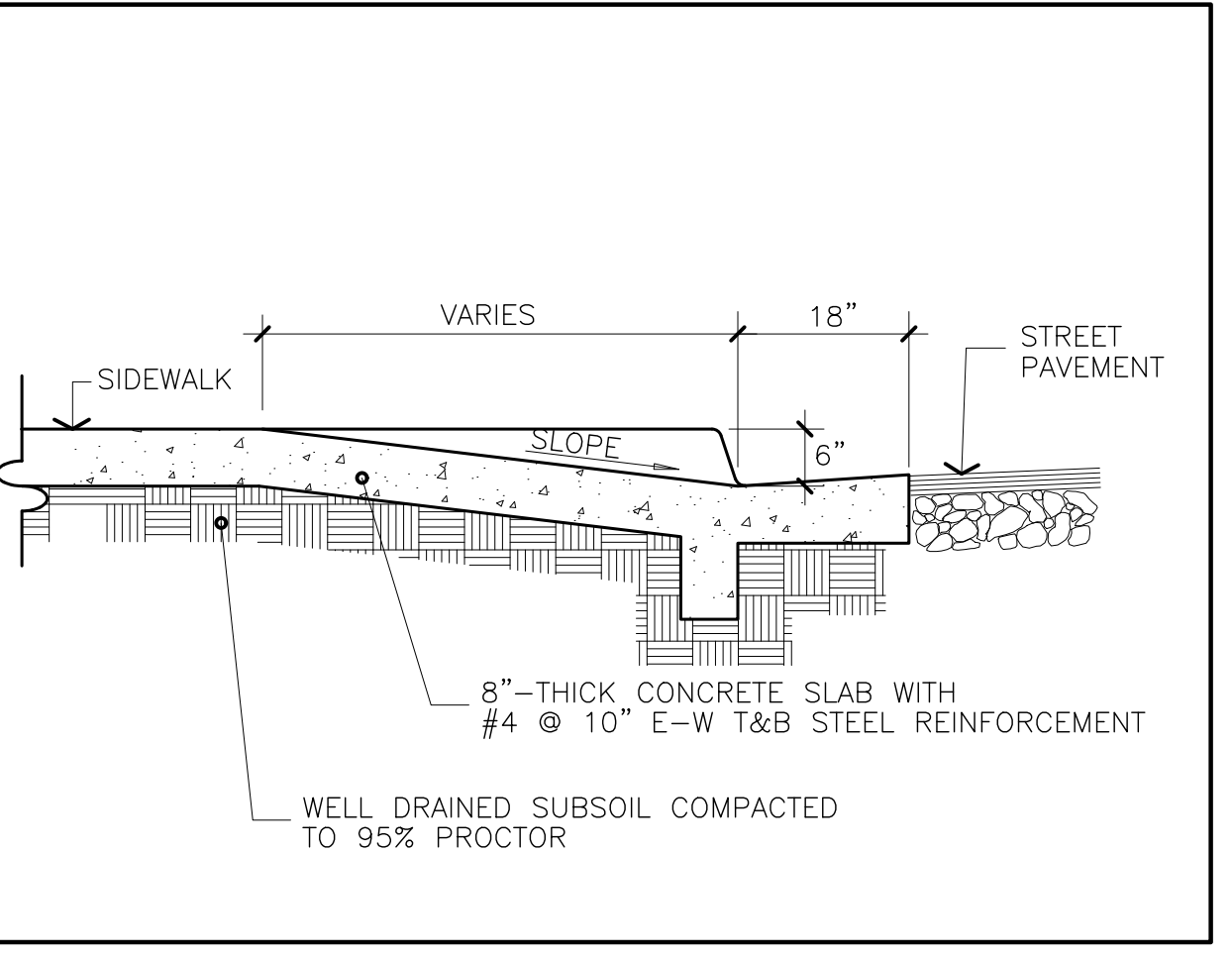
**SECTION A-A**  
 SCALE: 1/2" = 1' - 0"



**GATE FOOTING DETAIL**  
 SCALE: 1" = 1' - 0"

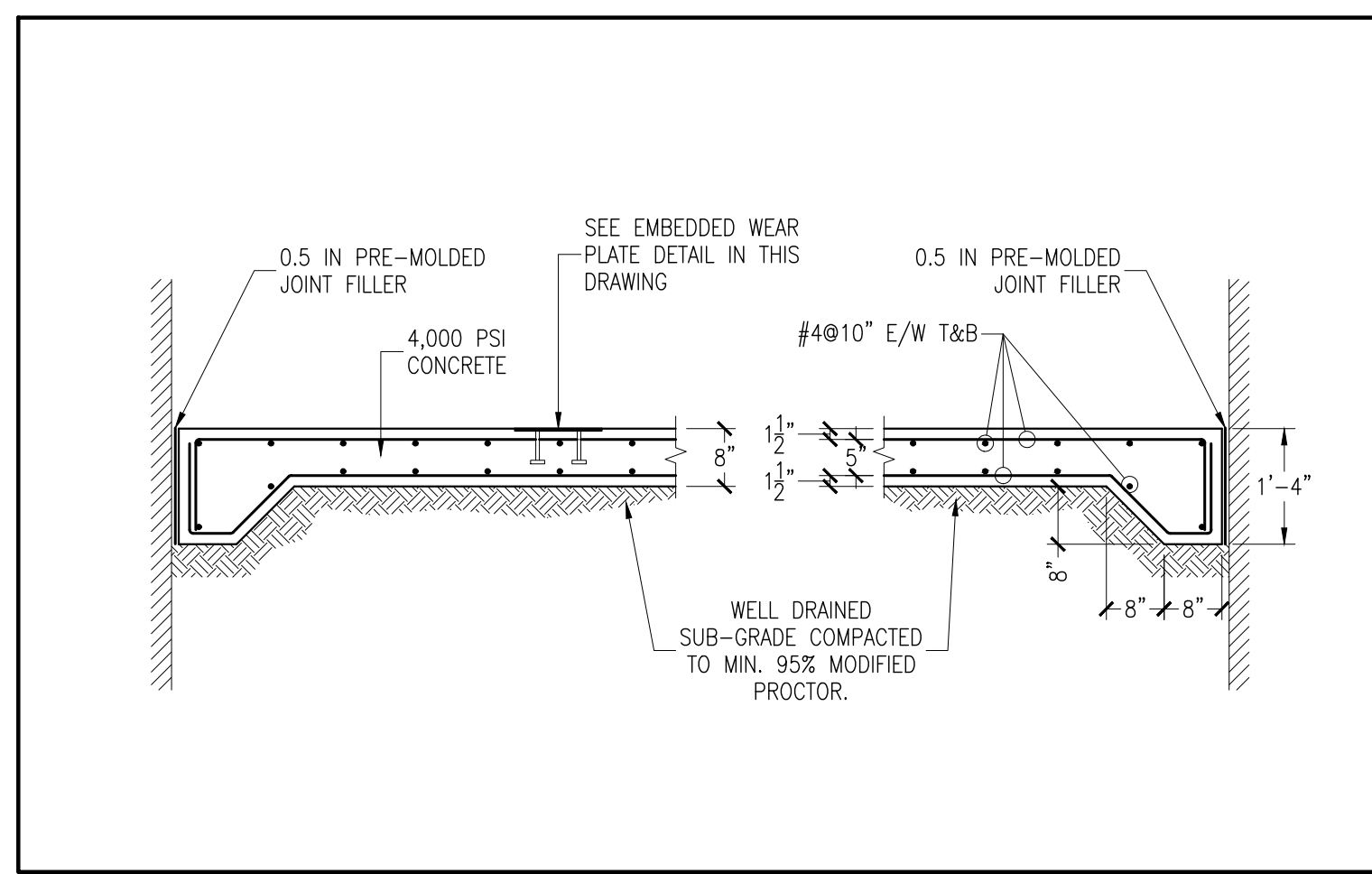


**TOP OF GATE DETAIL**  
 SCALE: 1" = 1' - 0"

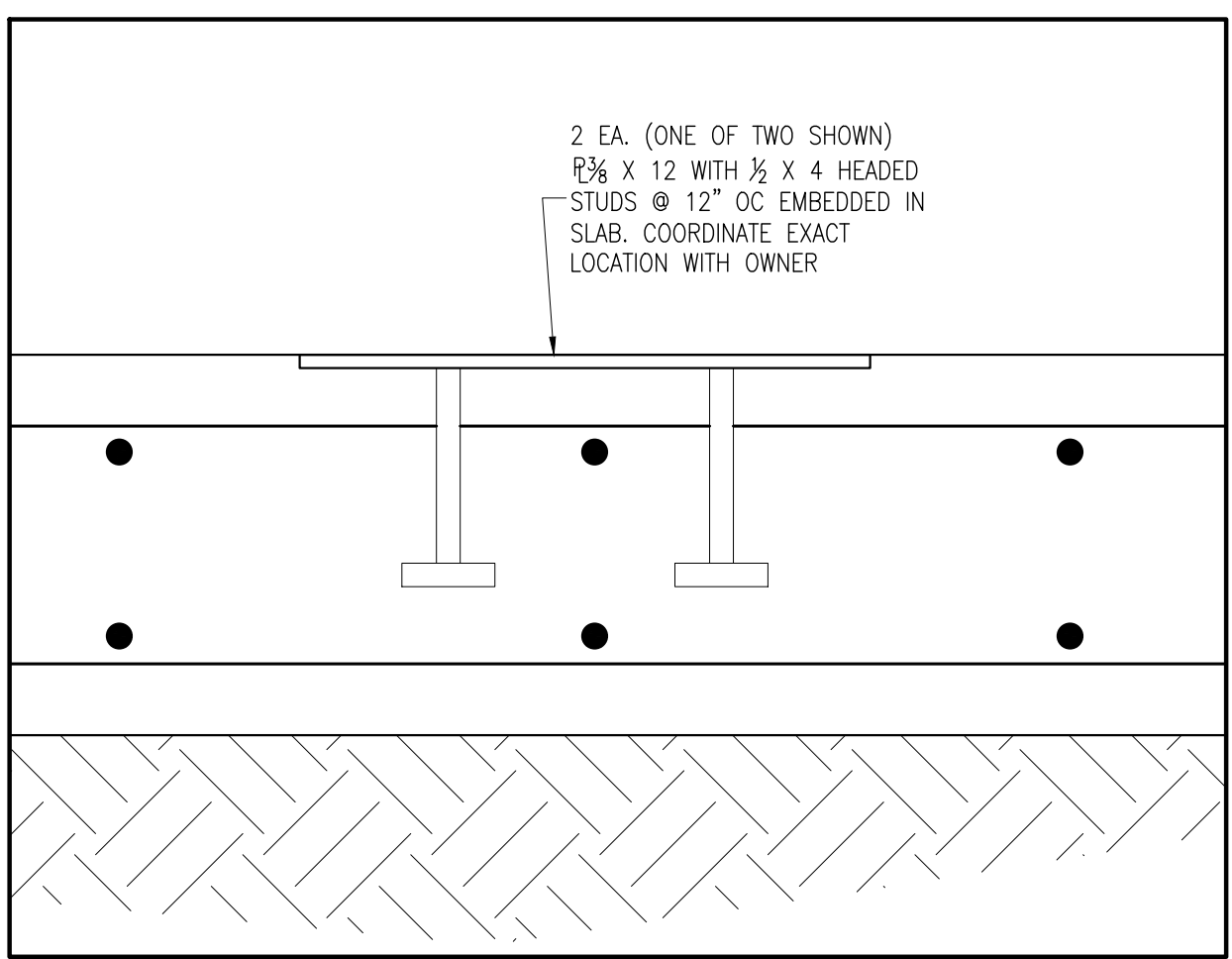


**GUTTER DETAIL**  
 NOT TO SCALE

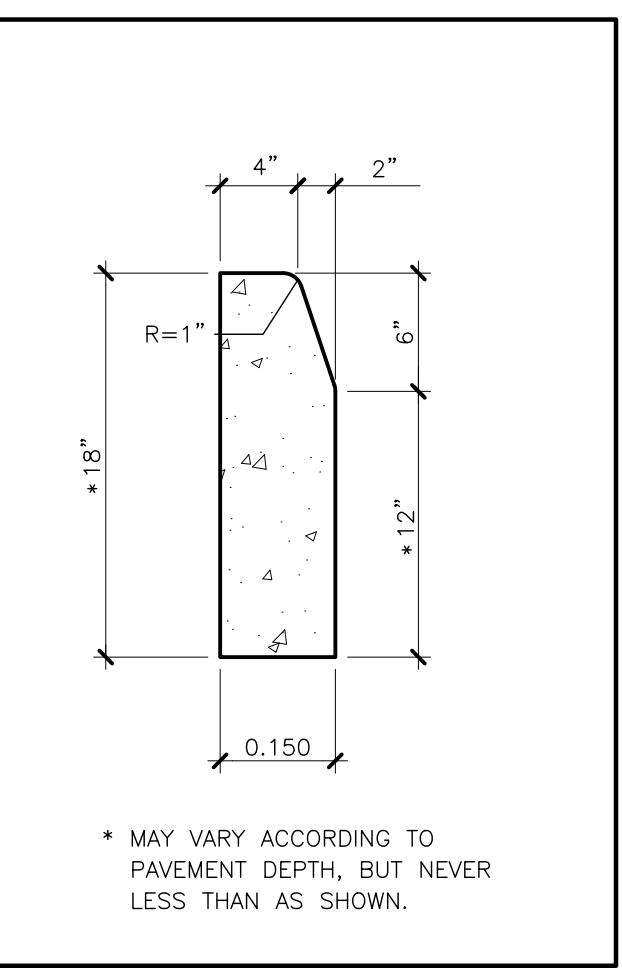
**NOTE**  
 ALL GALVANIZED STEEL SHALL BE PRIMED WITH ONE COAT OF SPECIALLY FORMULATED HIGH-BUILD, RUST-INHIBITING ALKYD PRIMER (LANCO SUPER GALVANIZED PRIMER SG-664 OR APPROVED EQUAL)  
  
 PAINT ALL PRIMED METALS WITH TWO COATS OF ACRYLIC URETHANE ENAMEL, COLOR AS SHOWN. (LANCO BASE TT-E-489G OR APPROVED EQUAL)



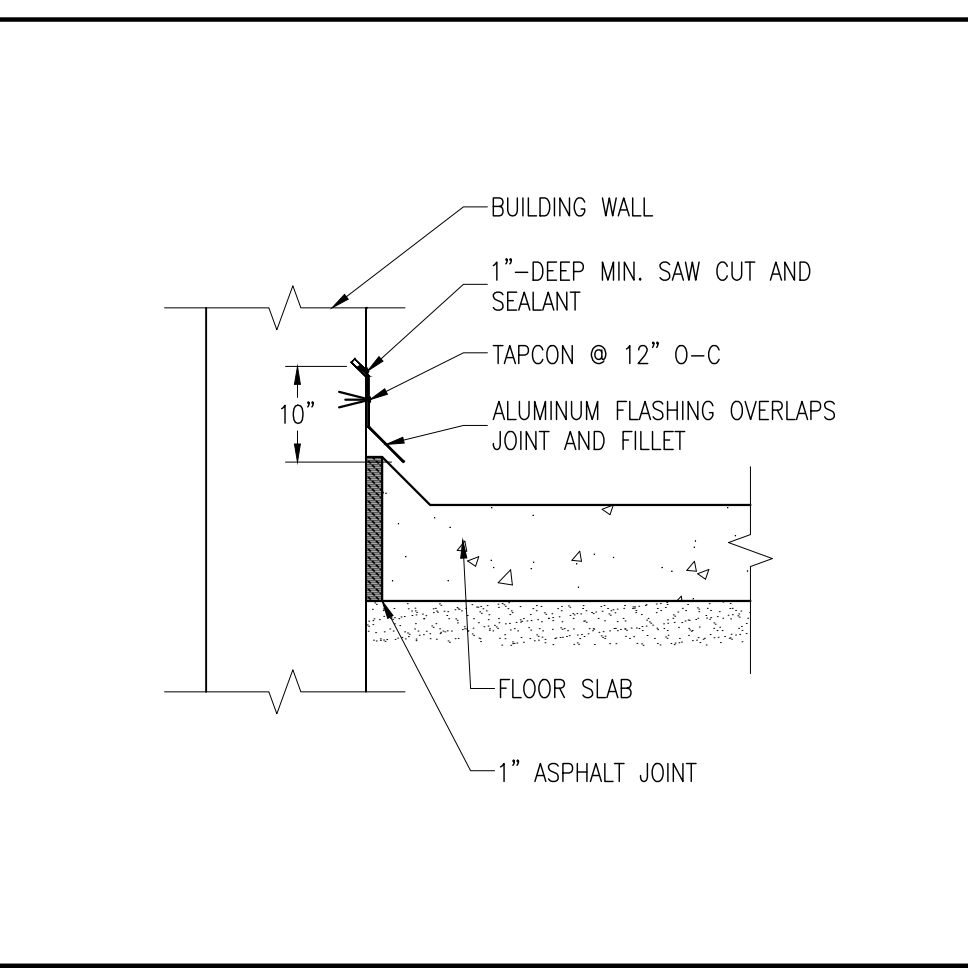
**SECTION THROUGH STRUCTURAL SLAB**  
 NOT TO SCALE



**EMBEDDED WEAR PLATE DETAIL**  
 NOT TO SCALE



**TYPE-D CURB DETAIL**  
 NOT TO SCALE



**FLASHING DETAIL**  
 NOT TO SCALE

THIS DRAWING OR PRINT DEPICTS THE DESIGN EFFORT OF MGA CONSULTING ENGINEER, AND IS ISSUED FOR REVIEW SOLELY AS AN INSTRUMENT OF THE SERVICES BEING RENDERED. IT REMAINS THE PROPERTY OF THIS OFFICE, SHALL BE USED ONLY BY AUTHORIZED PERSONS, AND SHALL NOT BE COPIED, REPRODUCED OR EXHIBITED UNLESS PERMISSION IN WRITING IS GRANTED. IT SHALL BE RETURNED UPON REQUEST.

PROFESSIONAL SEAL:

PROJECT

**WORLD PLAZA - RELOCALIZACIÓN COMPACTADORA DE BASURA**

**SAN JUAN**  
 Puerto Rico

REVISIONS

| Rev | Date      | Description      |
|-----|-----------|------------------|
| 0   | 01 JUN 23 | NEW DRAWING      |
| 2   | 15 FEB 24 | GENERAL REVISION |

File Name: .  
 Scale: AS SHOWN Date: FEB 2023

DRAWING TITLE

**SITE DETAILS**

DRAWING NO.  
**SI-2**