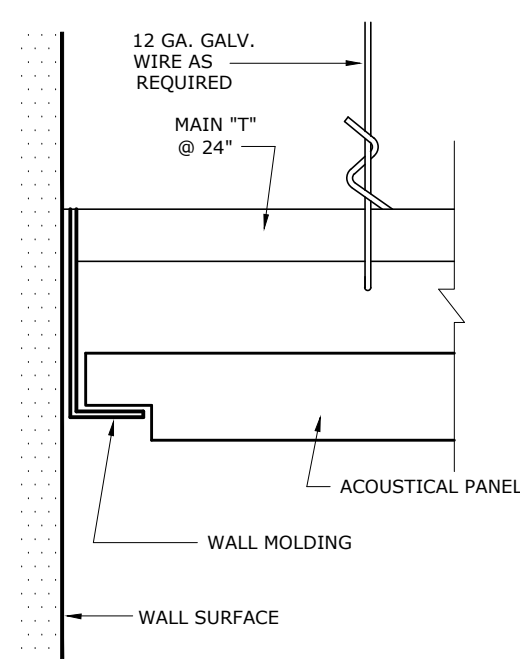
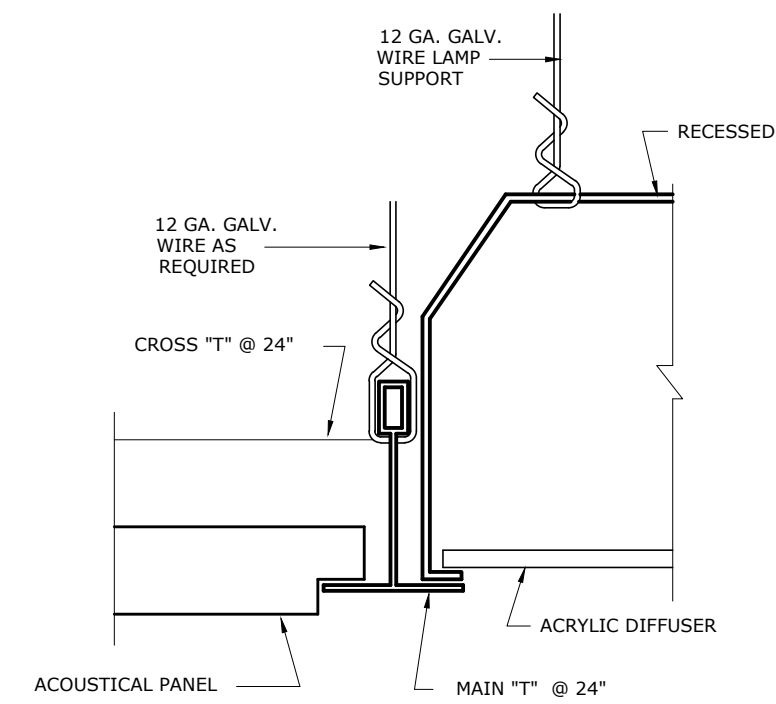


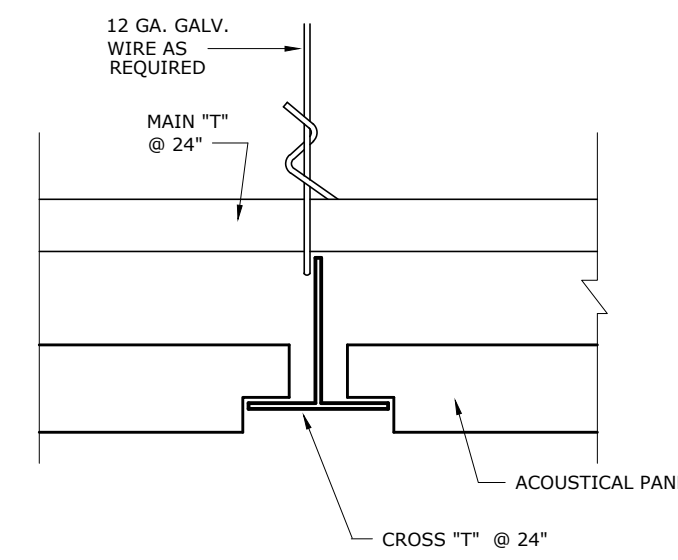
SHADOW MOLDING WALL ANGLE MOUNTED DETAIL
NOT TO SCALE



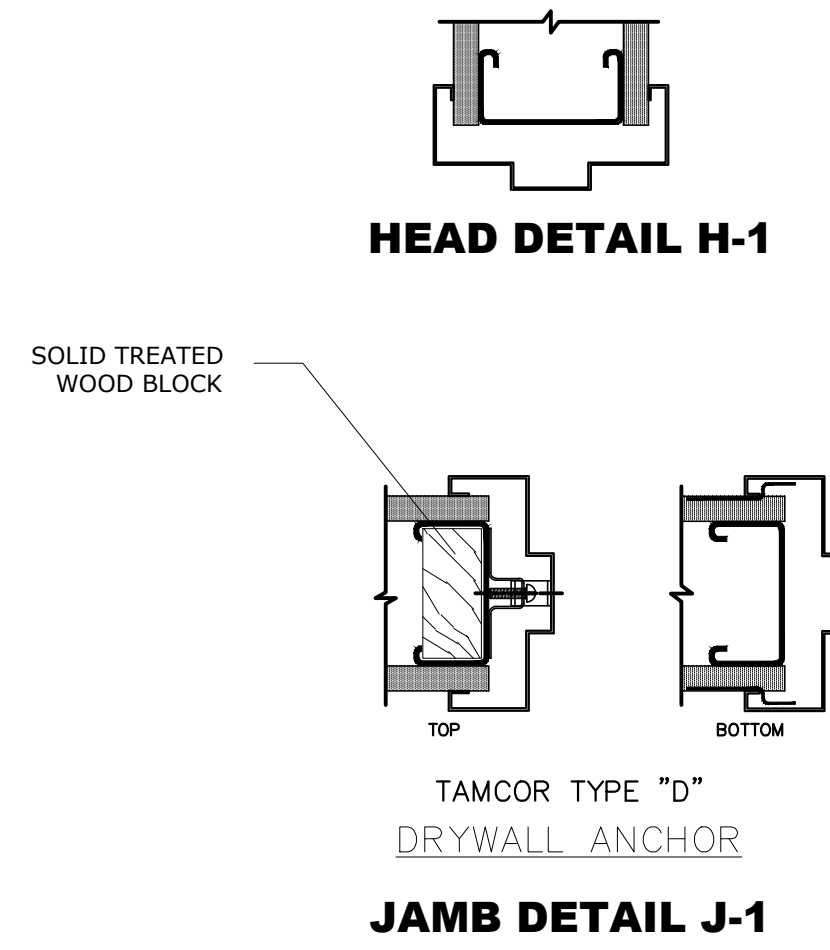
WALL ANCHORED TYP. DETAIL
NOT TO SCALE



LAMP SUPPORT TYPICAL DETAIL
NOT TO SCALE



CROSS "T" TYPICAL DETAIL
NOT TO SCALE



HEAD DETAIL H-1

JAMB DETAIL J-1

SUSPENDED CEILING TYPICAL DETAILS
NOT TO SCALE

General Notes:

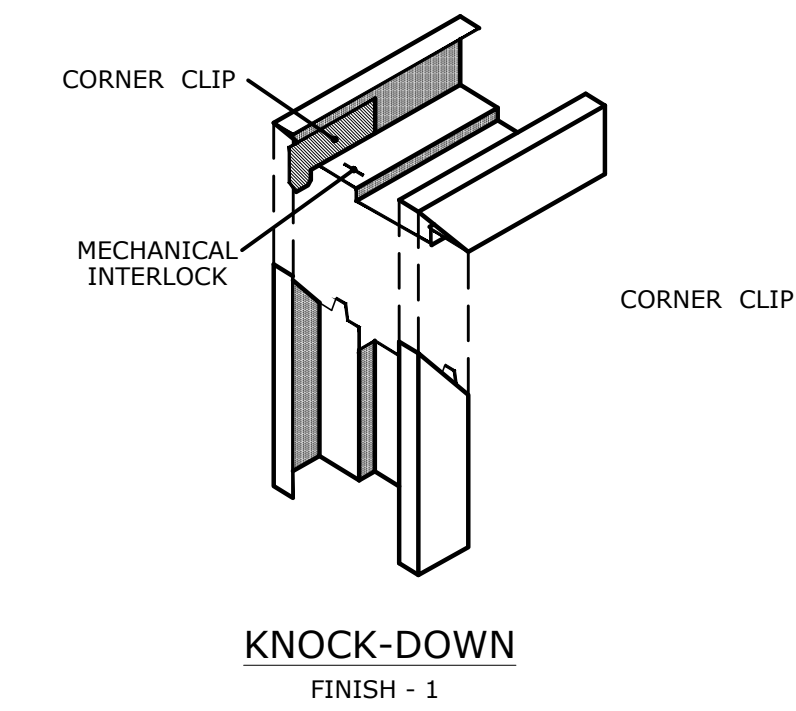
ALL CEILING SYSTEM SHALL BE NEW AS SPECIFICATION IN THIS SHEET.
AIR CONDITIONERS SHALL BE REINSTALLED BEFORE CEILING INSTALLATION.
ALL WALL THAT BE ERECTED UNTIL CEILING SLAB SHALL BE INSTALLED FIRST.
ALL WALLS SHALL BE PAINTED BEFORE INSTALL THE SUSPENDED CEILING.

AIR CONDITIONER NOTE:

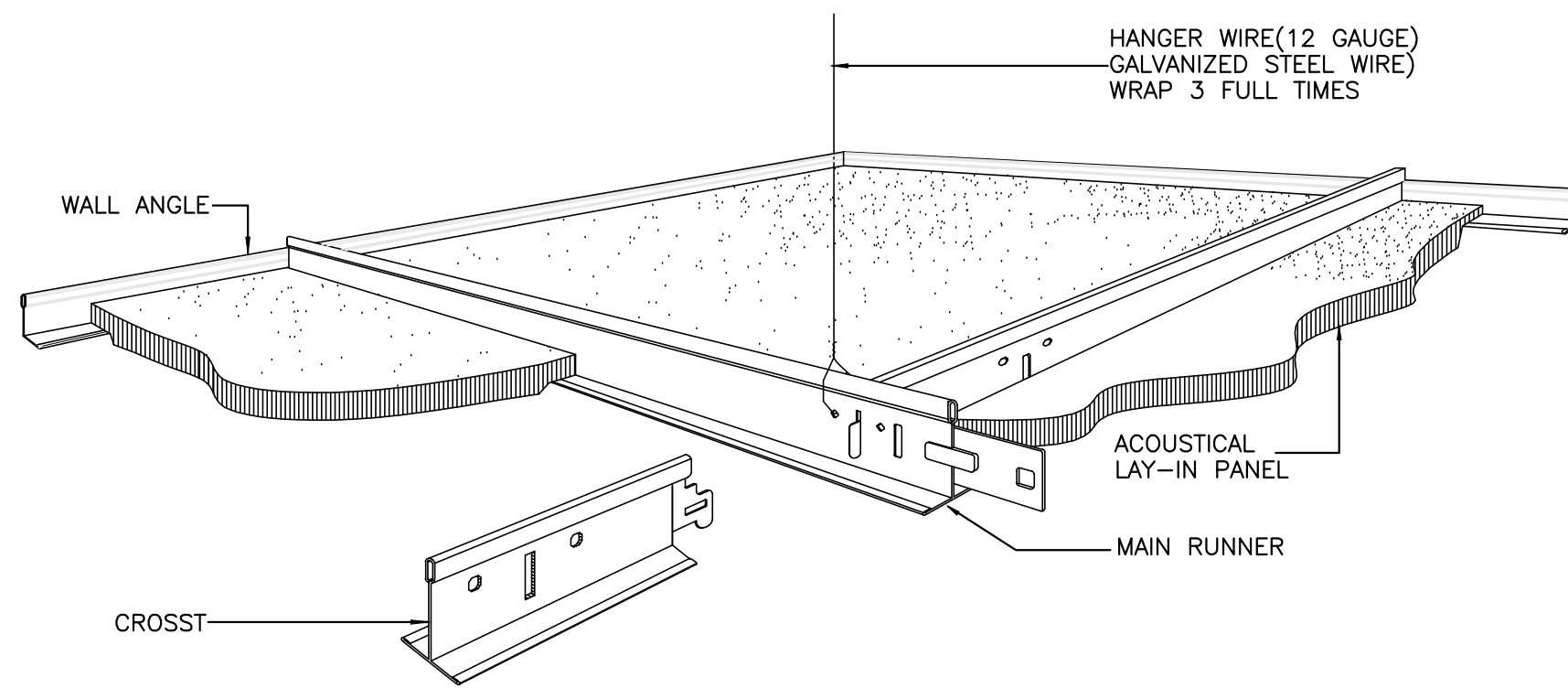
THE AIR SUPPLY IS SHOWN IN THIS PLAN FOR CEILING INFORMATION ONLY,
MECHANICAL WORK IS NOT INCLUDE IN THIS PROJECT.

CONSTRUCTION NOTE:

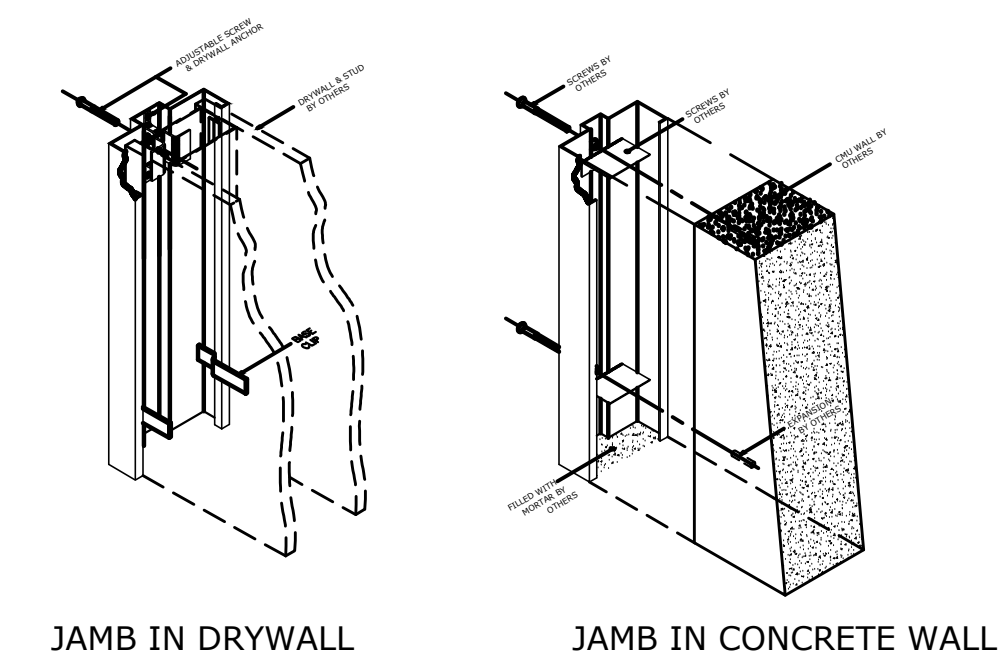
- 1.-THE FISSURED SHALL BE:
 - LAY-IN TYPE.
 - 5/8"x24"x24".
 - WHITE COLOR.
 - SHADOWLINE TAPERED EDGE.
- 2.-ALL CEILING LAMP SHALL BE:
 - ELECTRONIC BALLASTS DESIGNED FOR T8 LAMPS.
 - 3" DEEP CELL PARABOLIC SCREEN.
 - COLOR "SILVER REFLECTOR.
 - 24"x24" FULL SIZE.
 - LAMP COLOR 741.
 - LAMP TYPE: FB32-6"U
 - 9 CELL MODEL.
- 3.-THE HUNG CEILING FRAMING SHALL BE:
 - WHITE COLOR.
 - 7/8" SIZE.
 - INSTALL 8'-3" HEIGHT FROM FINISH FLOOR.



FRAME FINISH



ACOUSTICAL HUNG CEILING ASSEMBLY DETAIL-ISOMETRIC VIEW
NOT TO SCALE



JAMB IN DRYWALL

JAMB IN CONCRETE WALL

REVISIONS		BY
NO.	DESCRIPTION	DATE

TRIBUNAL GENERAL DE JUSTICIA OFICINA DE ADMINISTRACION DE LOS TRIBUNALES DIRECTORIA DE ADMINISTRACION OFICINA DE ADMINISTRACION Y CONSERVACION DE LOCALES	APPROVED BY: _____ APPROVED SIGN: _____ APPROVED DATE: _____
--------------------------------------------------------------------------------------------------------------------------------------------------------------------	--------------------------------------------------------------------

PROJECT NAME: REMODELACION DE ARCHIVO CENTRAL PROJECT LOCATION: PRIMER PISO ARCHIVO CENTRAL SAN JUAN , PUERTO RICO DRAWING DESCRIPTIONS: DETALLES TIPICOS DE CONSTRUCCION	GERENTE DE PROYECTO: OSCAR HERNANDEZ CHIEF ARCHITECT: DANIEL PADILLA DRAWING BY: P.MORALES FILE NAME: FEBRERO-2023 AS SHOWN
SHEET NO. A-7 OF 10	PROJECT DATE: FEBRERO-2023 PRINTING DATE: FEBRERO-2023 DRAWING SCALE: AS SHOWN