

REVISIONS	
NO.	DESCRIPTION

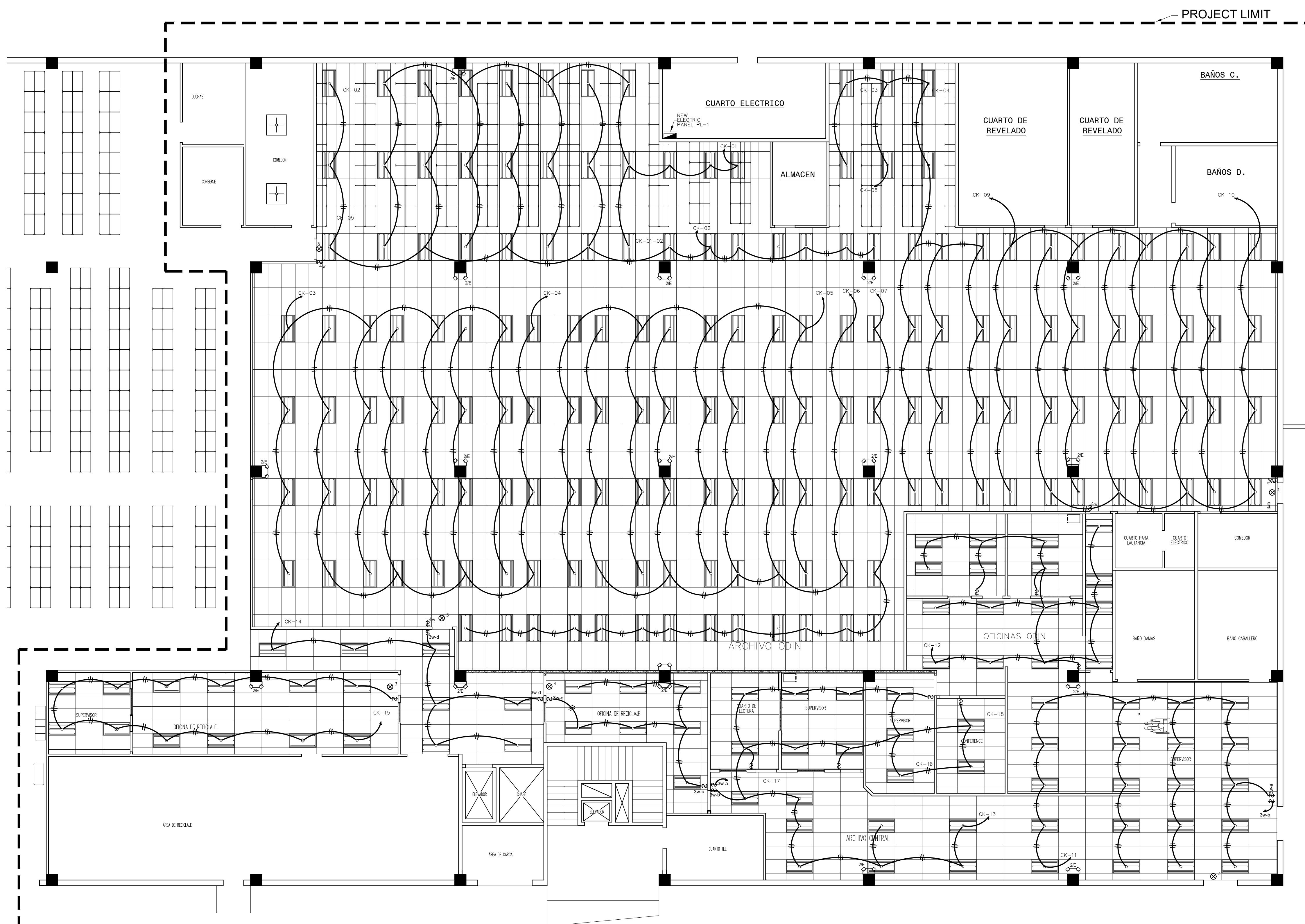
TRIBUNAL GENERAL DE JUSTICIA
OFICINA DE ADMINISTRACION DE LOS TRIBUNALES
DIRECTORIA DE ADMINISTRACION
OFICINA DE ADMINISTRACION Y CONSERVACION DE LOCALES

APPROVED BY: _____
 APPROVED DATE: _____

REMODELACION DE ARCHIVO CENTRAL
PLANTA ELECTRICA DE LUCES
PLANTA EXISTENTE DEL PRIMER NIVEL EDIF. AVE. BARBOSA # 427

PROJECT DATE: 22-Agosto-2008
 PROJECT LOCATION: ING. DANIEL PADILLA
 DRAWING BY: JOEL CARRION
 CHECKED BY: P. MORALES
 PRINTING DATE: 18-Marzo-2009
 DRAWING SCALE: 3/32"=1'-0"
 FILE NAME: 1702-ARCHIVO-GENERAL.dwg

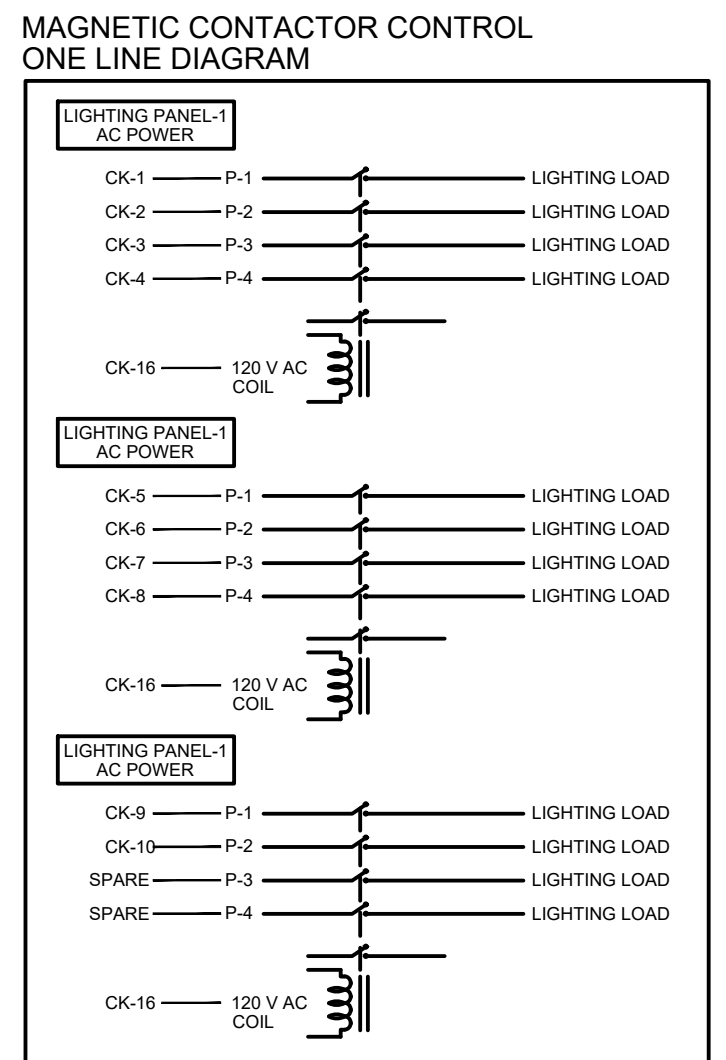
SHEET NO. **1-01**
 OF 2



- LEGEND:**
- 2'-0" x 4'-0" ACOUSTICAL HUNG CEILING
 - NEW 2'x4' WHITE FLAT PANEL LED LIGHT, 3200 MINIMUM LUMENS, 4000K LIGHT TEMPERATURE, TO BE INSTALLED.
 - NEW EXIT SIGN AND EMERGENCY LED TWO LIGHT COMBO, WITH BATTERY BACKUP OF 60 MINUTES RUN TIME OR MORE, RATED UL 924, UL DAMP LOCATION AND NFPA 101, TO BE INSTALLED.
 - NEW LED TWO - LIGHT EMERGENCY FIXTURE WITH BATTERY BACKUP OF 60 MINUTES RUN TIME OR MORE, RATED UL 924, UL DAMP LOCATION AND NFPA 101, TO BE INSTALLED.
 - NEW ELECTRICAL BREAKER PANEL, EQUAL OR SIMILAR TO SQUARED 100amp, 24SPARE, MAIN BREAKER LOAD CENTER, MODEL: HOM2448M100PCVP, TO BE INSTALLED.
 - NEW 20 AMP, FOUR WAY WHITE COMMERCIAL GRADE SWITCH, TO BE INSTALLED.
 - NEW 20 AMP, THREE WAY WHITE COMMERCIAL GRADE SWITCH, TO BE INSTALLED.
 - NEW 20 AMP, SINGLE WHITE COMMERCIAL GRADE SWITCH, TO BE INSTALLED.
- NOTES:**
1. SHALL BE USE EMT TUBING, MINIMUM SIZE 3/4"Ø.
 2. ALL SWITCHES AND COVER SHALL BE WHITE COLOR.
 3. ALL LIGHTING CIRCUITS SHALL BE CONNECTED TO THE NEW ELECTRICAL BREAKER PANEL TO BE INSTALLED.
 4. ALL NEW CIRCUITS SHALL BE IDENTIFIED IN THE CONDUCTORS, AND IN THE ELECTRICAL PANEL LEGEND.
 5. ALL NEW ELECTRICAL BREAKER PANEL SHALL BE IDENTIFIED WITH LABEL.
 6. SHALL BE INSTALL AN 80KA, 120 /240V VOLT SURGE PROTECTION DEVICE TO THE NEW ELECTRIC PANEL PL-1, USING A 30AMP, 120 /240V TWO-POLE CIRCUIT BREAKER. SIMILAR OR EQUAL TO SQUARE D MODEL: HEPD80. ALL RELATED PARTS SHALL BE PROVIDED AND INSTALLED BY CONTRACTOR.
 7. UNDER ANY CIRCUMSTANCE SHOULD BE REMOVED OR CONNECT AN ENERGIZED ELECTRICAL SYSTEM. ALL SOURCE OF POWER SHALL BE TURNED OFF AND LOCK OUT DURING WORKING TIME FRAME.

MAIN BREAKER PANEL BOARD SCHEDULE PANEL 1

DESC.	MANS		BREAKERS		WIRING		CONDUIT		
	TYPE	CAP. - A	CTK	POLES	TRIP	SIZE	TYPE	SIZE	
VOLTAGE: 120/240V PHASE (S): 1PH NO. WIRES: 3W SPACES: 24" MOUNTING: FLUSH CAPACITY: 100 AMP. MANUFACTURE: SQUARED OR SIMILAR TYPE: INDOOR NEMA 1	1	1	20	10	THHN	3/4"	EMT	GENERAL LIGHTING	
	2	1	20	10	THHN	3/4"	EMT	GENERAL LIGHTING	
	3	1	20	10	THHN	3/4"	EMT	GENERAL LIGHTING	
	4	1	20	10	THHN	3/4"	EMT	GENERAL LIGHTING	
	5	1	20	10	THHN	3/4"	EMT	GENERAL LIGHTING	
	6	1	20	10	THHN	3/4"	EMT	GENERAL LIGHTING	
	7	1	20	10	THHN	3/4"	EMT	GENERAL LIGHTING	
	8	1	20	10	THHN	3/4"	EMT	GENERAL LIGHTING	
	9	1	20	10	THHN	3/4"	EMT	GENERAL LIGHTING	
	10	1	20	10	THHN	3/4"	EMT	GENERAL LIGHTING	
	11	1	20	10	THHN	3/4"	EMT	GENERAL LIGHTING	
	12	1	20	10	THHN	3/4"	EMT	GENERAL LIGHTING	
	13	1	20	10	THHN	3/4"	EMT	GENERAL LIGHTING	
	14	1	20	10	THHN	3/4"	EMT	GENERAL LIGHTING	
	15	1	20	10	THHN	3/4"	EMT	GENERAL LIGHTING	
	16	1	20	10	THHN	3/4"	EMT	LIGHTING CONTACTOR CONTROL	
	17								SPARE
	18								SPARE



LIGHTING MAGNETIC CONTACTOR SCHEDULE

DESC.	DETAILS	CONTACTOR	POLES	CKT.	CONTROL CKT
MAGNETIC CONTACTOR WITH ENCLOSURE	VOLTAGE: 120/240V TYPE: L # POLES : 4 CAPACITY: 30 amp. MANUFACTURE: SQUARED D 8903L040V02 OR SIMILAR	1	P1	1	LIGHTING PANEL-1 CK-16
			P2	2	
			P3	3	
			P4	4	
		2	P1	5	
			P2	6	
			P3	7	
			P4	8	
		3	P1	9	
			P2	10	
			P3	SPARRE	
			P4	SPARRE	