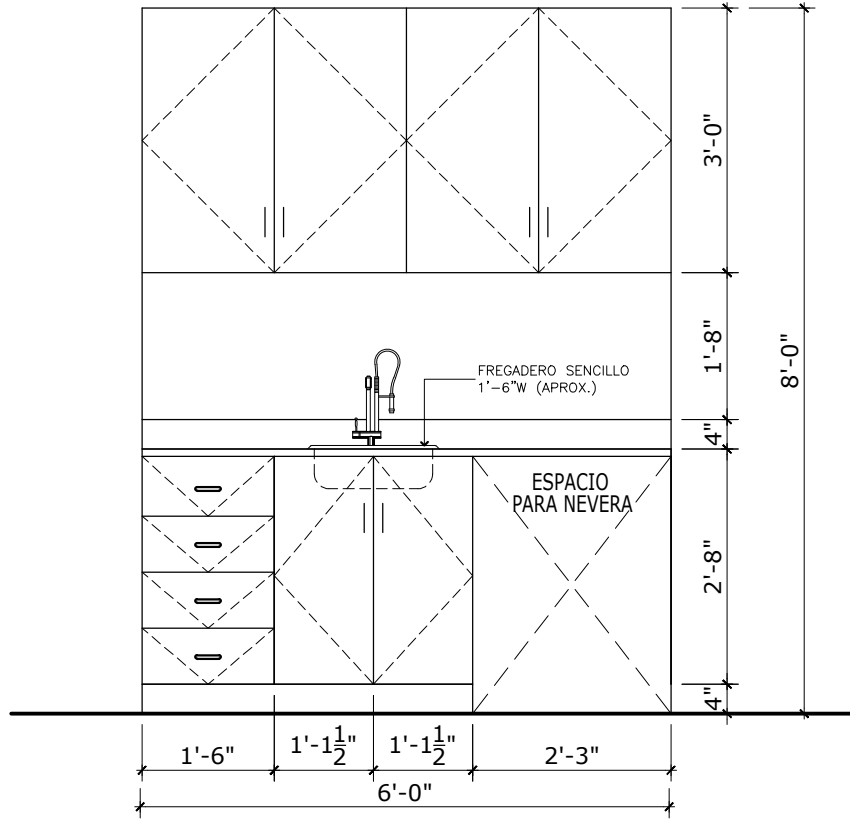
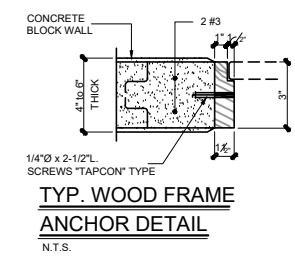
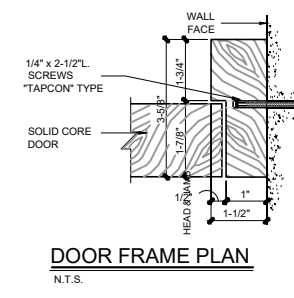
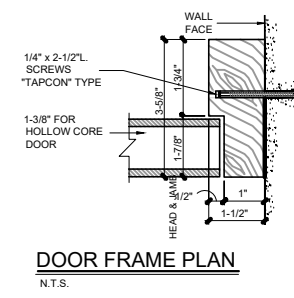


SECTION - A  
1/2" = 1'-0"



RELACION DE PUERTAS

MKD	ABERTURA		TAMAÑO DE PUERTA			MATERIAL		TIPO	CANTIDAD	OBSERVACIONES
	ANCHO	ALTURA	ANCHO	ALTURA	ESPESOR	MARCO	PANEL			
①	3'-4"	8'-0"	3'-0"	7'-0"	1-3/4"	MADERA	MADERA	I	2	
②	3'-4"	8'-0"	3'-0"	7'-0"	1-3/4"	MADERA	MADERA	II	1	1/4" CLEAR LAMINATED SAFETY GLASS
③	5'-0"	8'-0"	(2 HOJAS) 2'-6"	8'-0"	1-3/4"	MADERA	GLASS	III	1	FULL GLASS
④	3'-0"	7'-0"	3'-0"	7'-0"	1-3/8"	MADERA	MADERA	IV	5	
⑤	2'-8"	7'-0"	2'-8"	7'-0"	1-3/8"	MADERA	MADERA	V	1	



R E V I S I O N S

NO.	DESCRIPTION	DATE	BY

TRIBUNAL GENERAL DE JUSTICIA  
OFICINA DE ADMINISTRACION DE LOS TRIBUNALES  
DIRECTORIA DE ADMINISTRACION  
OFICINA DE ADMINISTRACION Y CONSERVACION DE LOCALES

APPROVED BY: \_\_\_\_\_ APPROVED SIGN: \_\_\_\_\_ APPROVED DATE: \_\_\_\_\_

PROJECT NAME: **NUEVA OFINA**  
PROJECT LOCATION: **TRIBUNAL SUPREMO**  
DRAWING DESCRIPTIONS: **HOJA DE PUERTAS DETALLES TÍPICOS**

CHECKED BY: **DANIEL PAOLINA**  
DRAWING BY: **D. PAOLINA**  
PROJECT DATE: **FEBRERO-2016**  
PRINTING DATE: \_\_\_\_\_  
DRAWING SCALE: **1/4"=1'-0"**

SHEET NO. **A-07**  
OF **08**